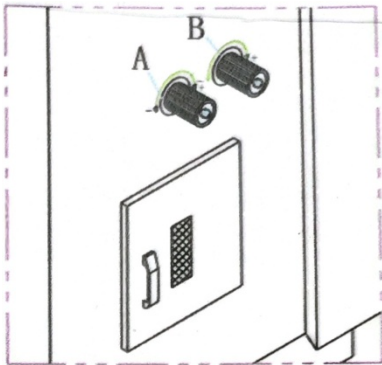


Replacement with knife (suitable for EA-SP300/ EA-SP420/ EA-SP520)

When the blade wear reaches a certain degree and the width is less than 20, the blade should be replaced. Otherwise, unexpected dangers may occur. be careful! Before removing the old knife, cut off the power first and then use a handheld grinding wheel to blunt the edge of the blade to avoid accidents.

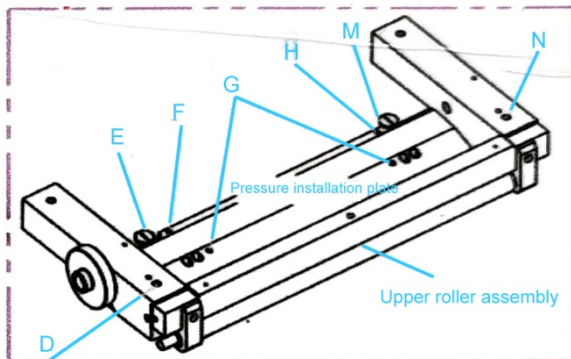
Step 1: Remove the front and left/right panels from the front work panel, open the covers on both ends and the safety doors on both sides, and remove the front door.

Step 2: Step on the pedal to lower the feeding roller, disengage it from the blade, and lock the adjustment handle A as shown in (Figure 6 附图六) (middle handle of the front door).



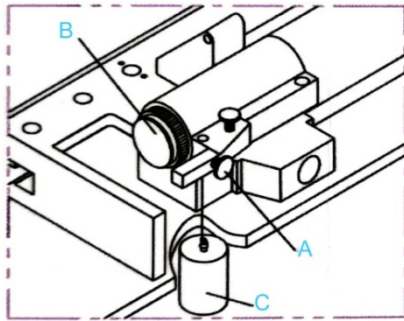
附图·六

Step 3: Fold off the upper cover plate of the machine body (see Figure 7 附图七) and loosen the locking screws E \ M at both ends (note! Record the locking nut markings and original position markings on both ends, and do not allow arbitrary adjustment of screw F/H. Use your hands to screw the removed screws E/M into the left and right threaded holes G on the pressure knife mounting plate, pull the screws E/M back by hand, remove the pressure knife mounting plate, loosen screw D/N, and remove the upper roller assembly (see Figure 7 附图七); Pull the inclined block A of the two push knives back to the middle, and use two positioning pins B to secure it. Adjust the inclined block A of the two pressure knives and hang it on the positioning pin B;



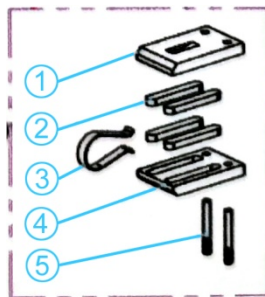
附图·七

Step 4: Rotate handwheel B counterclockwise by hand to retract the rack, lock adjusting screw A (see Figure 8 附图八), and release the push plate behind the grinding wheel;



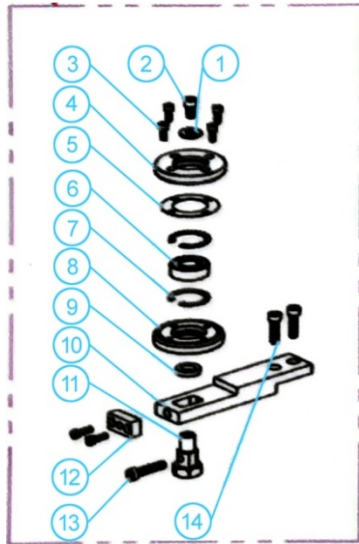
附图·八

Step 5: Remove the lubrication components on the blade (Figure 8 附图八), first pull out the plate spring 3, then loosen the screws on the upper lubrication plate 1, and remove the upper lubrication plate;



附图八

Step 6: In (Figure 9 附图九), rotate the screw 13 in the middle of item 12 clockwise to guide the belt knife to open it, and then remove the fixing screw of item 14; Remove the blade guide wheel assembly.

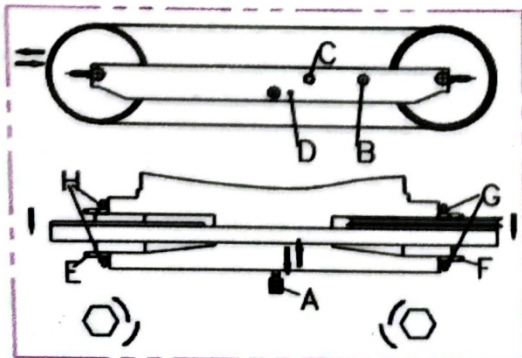


附图九

Step 7: Remove the sharpening wheel belt F, separate the two grinding wheels, and remove the feeding motor belt.

Step 8: Release the pull rods on both sides of the pedal (adjust the tension of the two pull rods to be consistent during installation).

Step 9: Rotate the tension adjustment shaft B counterclockwise (as shown in Figure 10 附图十) to retract the passive belt, release the belt cutter, and remove the belt cutter.



附图·十

Step 10: Replace the new knife and rotate it clockwise (as shown in Figure 10 附图十). Adjust the tension shaft B of the belt knife to open it (note! At this time, rotate the flywheel clockwise by hand while opening it to adjust the belt knife to achieve normal path operation between the two flywheels). When the belt knife is correctly tensioned, the warning sign (which is half red and half white in color) is located in the middle of the hole.

Step 11: Reset the above components in reverse.