

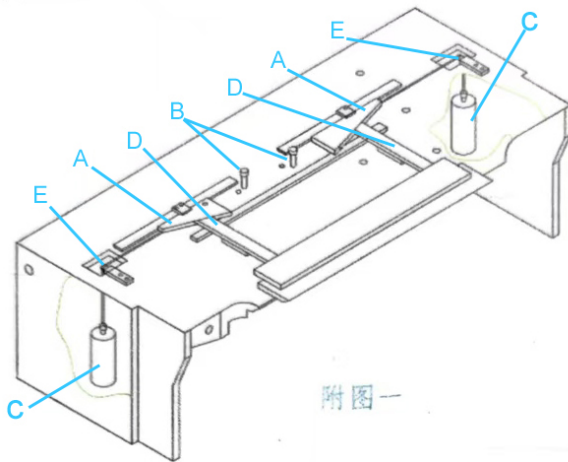
New machine installation and debugging instructions

1. Safety inspection

Vibration during transportation can have a negative impact on the machine. Check if all key points are in a protected state.

a) Open the rear platform and check if the two inclined blocks A of the pushing blade are locked by two positioning pins B (as shown in Figure 1 附图一), and if the counterweight blocks C on both sides are in a hovering state (as shown in the figure).

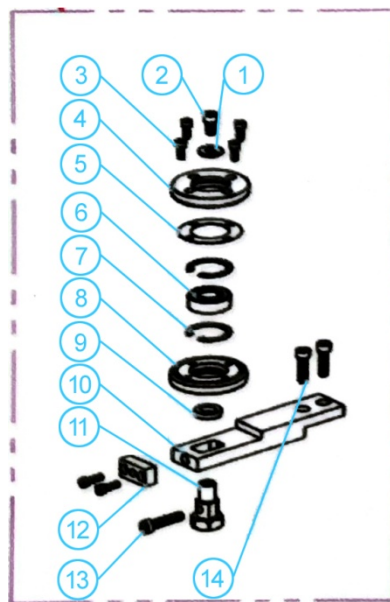
b) Is the soft rope connecting the diagonal blocks A on both sides of the picture hooked by the pins E on both sides.



c) Open the left and right upper covers, open the front doors on both sides, and observe whether the upper and lower guide wheels (as shown in Figure 2 附图二) are against the blade. Otherwise, adjust the adjusting screw in the middle of the small square B (No. 12 in Figure 3 附图三) clockwise to make the two guide wheels fit snugly with the blade edge.

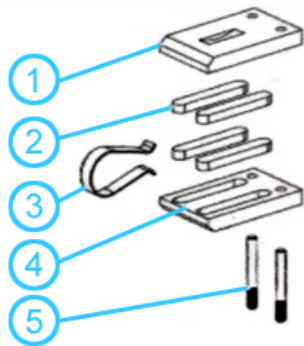
Guiding wheel set

with a knife



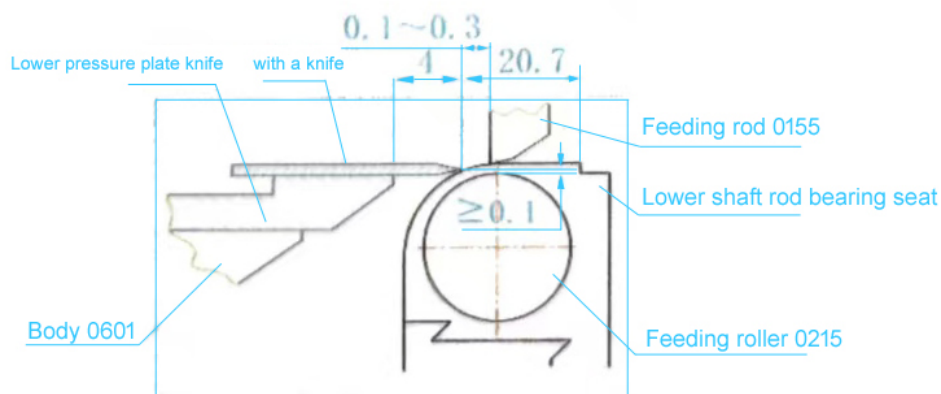
附图三

e) Are the 2 pairs of lubricating felt springs with serial number 3 on the knife belt locked in the slots of serial numbers 1 and 4, and in the normal position. (Figure 4 附图四).



附图四

f) Check if there is a gap between the feeding roller and the blade edge (see Figure 5 附图五, the minimum gap is 0.1m). Otherwise, rotate and adjust the above points in the direction shown in the diagram. Only when they are all in a protected state can the machine be turned on and the workpiece be debugged.



附图五

2. Startup:

a) Before starting up, it is necessary to have a detailed understanding of the operation panel. Rotate the main power switch located on the right side of the electrical box to the ON position, press the leftmost control button on the control panel, start the knife operation, and the machine starts running. Parameters can be set according to actual needs.

b) After the machine has been idle for 2 to 3 minutes, items A and B in the above safety check can be released.

c) Note: (1) It is strictly prohibited to open the upper and lower guide wheels or adjust the screws arbitrarily during startup operation, in order to prevent the knife from shifting forward, causing incorrect position and accidents.

(2) The machine is equipped with an electronic phase automatic detection system. When the power is turned on and the set direction is not consistent, it cannot be started. Simply replace any two of the three wires (the electronic system is only for forward rotation).